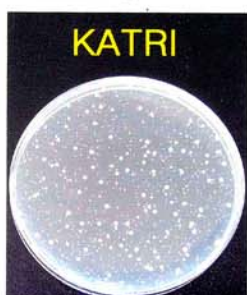


BEFORE TESTING
13000 Bacterias



AFTER TESTED
100 Bacterias



BEFORE TESTING
13000 Bacterias



AFTER TESTED
100 Bacterias

KATRI Korea Apparel Testing & Research Institute

(<http://www.katri.re.kr>)

232-22, Yongdu-dong, Dongdaemun-gu, Seoul, Korea. TEL : 82-2-925-2451 FAX : 82-2-925-2462

Korea Government Designated Service Supplier
 Approved Laboratory of the International Wool Secretariat (IWS)
 Accredited Laboratory by the Japan Textile Products Quality & Technology Center (QTEC)
 Affiliated Laboratory by the International Down & Feather Testing Laboratory (IDFL)

Member of ASTM
 AATCC
 QTEC
 TI

TEST REPORT

KATRI NO. : SE3 - 021978-1

DATE : DEC. 02, 2003.

APPLICANT : Wooleez

PAGE (S) : 1 OF 1

SAMPLE DESCRIPTION : ONE(1) PAIR OF SUBMITTED SOCKS

RECEIVED DATE : NOV. 20, 2003 ***

◆ TEST ITEM : Assessment of Antibacterial Activity [%],
 KS K 0693:2001 (Antibacterial assessment of Textile Materials)

▷ TEST RESULT :

Sample	Bacteriostatic Reduction rate(%)	
	1) Test bacteria①	2) Test bacteria②
#1 : After 20 washes	99.9	99.9

▷ TEST CONDITION

- Test Bacteria : 1) Test bacteria① - *Staphylococcus aureus* ATCC 6538
 2) Test bacteria② - *Klebsiella pneumoniae* ATCC 4352
- Conc. of Inoculum : 1) Test bacteria① - 130000 CFU/mL
 2) Test bacteria② - 120000 CFU/mL
- Control specimen : Cotton standard fabric (KS K 0905:2001)
- Nonionic surfactant : Tween 80, added to Inoculum (0.05%)
- Washing method : ISO 6330 - 2000 (Washing procedure : 8A)
 (Front-loading, horizontal drum type, 2kg total load, ECE detergent,
 30°C, gentle cycle, tumble dry)

Hong Wonjo
 WONJOO HONG
 Director General

The results on this sheet are offered in good faith on the basis that they were obtained in our laboratory from the samples submitted and may not truly represent.